



**BERVES**  
**ENGINEERING LTD.**  
ENGINEERED TO STANDARD.

# COMPANY PROFILE





**BERVES**  
ENGINEERING LTD.  
ENGINEERED TO STANDARD.

# INTRODUCTION



We have the greatest pleasure to introduce **BERVES ENGINEERING LIMITED** to your establishment for award of contracts.



**BERVES**  
ENGINEERING LTD.  
ENGINEERED TO STANDARD.

# INTRODUCTION

(CONT'D)

We have the requisite know-how to handle any job awarded to our company in our status as:

- Welding and Fabrication
- Sandblasting and Coating
- Pipping
- Civil Works
- Labour Hiring
- Electrical Instrumentation
- Structure and Tank Works
- Plant Installations
- Scaffolding
- Rubber Lining
- Outsourcing

Hoping BERVES ENGINEERING LIMETED will be considered for award of contracts by your noble company.

Yours faithfully,  
Solomon Gyan  
(DIRECTOR)



**BERVES**  
ENGINEERING LTD  
ENGINEERED TO STANDARD



Berves Engineering (GH) Ltd, founded in 2011, is a Mechanical, Electrical and Civil engineering company headquartered in Kenyasi, Brong Ahafo Region, and Ghana.

Berves Engineering is a company solely owned by indigenous Ghanaians who are expert in Mechanical, Electrical and Civil Engineering in Ghana.

Over the years the group has undertaken many projects and accumulated skills,

know-how and experiences in design and plant solution, projects management services, and related engineering works.

## COMPANY DESCRIPTION



## COMPANY DESCRIPTION (CONT'D)

Today, BERVES ENGINEERING LIMITED takes on the role of main contractor for small to large size projects and performs project management services to co-ordinate specialist trades for industrial and commercial project. We also provide design inputs and engineering solution as value-add services to our clients. Our Objective is to provide our clients with an “I am assured” experience when we are chosen to execute their projects. Our emphasis on clear communication and follow-through procedures ensures that client’s objectives are top priority in the planning and execution of all our processes.

# VALUES

**Effective Leadership-** We develop leaders, foster trust, openness and collaboration to develop leaders focused on sustainable, superior performance. We set positive examples and invest in personnel and subcontractors so that they can actively lead in all business area.

**Occupational Safety-** No task is too important that we cannot do it safety. We uphold a positive and proactive safety culture and lead by example in all aspects of our business. We strive to exceed better practices and install these values in our workforce.

**Environmental Sustainability and Conservation-** We look after our environment for the future generations. We recognize the lasting and permanent presence of our activities and strive to protect the environment by upholding effective and efficient environmental and sustainable practices as part of everyday business managed and spearheaded by conservation inspired programmer in areas we operate.



# VALUES (CONT'D)



**BERVES**  
ENGINEERING LTD.  
ENGINEERED TO STANDARD.

**Integrity**- We do what we say, we conduct our business in accordance with the highest standards of professional behaviour and ethics. We are transparent, honest and ethical in all our interactions with personnel, clients, subcontractors and the general public.

**Innovation**- We anticipate change and shape it to fit our purposes. We acknowledge the weakness within our industry to create ethical, forward thinking solutions to overcome them. We identify, develop and display leading edge construction methods, plant, equipment and process improvement tools.

**Continuous Improvement**- We are not satisfied with the status quo. We measure, monitor, analyse and improve productivity, processes, and tasks ourselves to satisfy clients to our own high expectations. We work with enthusiasm, courtesy, intellect and are driven to surpass what we have already achieved. We are not afraid to stand alone especially when it is the right thing to do.

# VISION & MISSION

## Our Vision

To be a global company with a African corporate brand that inspires the continent's professionals into attaining of engineering excellence.

## Our Mission

To deliver safe, sustainable, high quality projects and services which upholds our core values at Berves Engineering Group legacy.







**BERVES**  
ENGINEERING LTD.  
ENGINEERED TO STANDARD.

# OUR SERVICES

## Steel Works:

- Welding and Fabrication
- Pipping
- Structure and Tanks Works
- Plant Installations
- Ruber Lining
- SandBlasting and Coating

Civil and Earth Works

Electrical Instrumentation

Scaffolding and Rentals

Labour Hiring

Material Supply

Equipment Supply





**BERVES**  
ENGINEERING LTD.  
ENGINEERED TO STANDARD.

# TEAM MEMBERS



**SOLOMON GYAN**  
CEO/ Director



**HENRY DUNEEH**  
Administrative Manager



**VICTOR OBOUR GYAN**  
Human Resource



**MOHAMMED SULLEY**  
Engineering/ Technical Manager



**AUGUSTINE BOATENG**  
HSE Manager



**BERVES**  
ENGINEERING LTD.  
ENGINEERED TO STANDARD.

# PARTNERS

The under listed are some of our clients who are happy with our services.

**ASANKO** GOLD



**UMA**

UNDERGROUND  
MINING  
ALLIANCE

A ROCKSURE and AFRICAN UNDERGROUND MINING SERVICES JOINT VENTURE

**B**arminco

GOLDEN STAR



RESOURCES LTD.



**Newmont**

GHANA



ANGLOGOLD  
ASHANTI





**BERVES**  
ENGINEERING LTD.  
ENGINEERED TO STANDARD.

# WORK EXPERIENCE



**UNDERGROUND LOADER WINGS WITH TOW HOOKS**



**BERVES**  
ENGINEERING LTD.  
ENGINEERED TO STANDARD.

# WORK EXPERIENCE



**UNDERGROUND LOADER WINGS WITH TOW HOOKS (CONT'D)**



**BERVES**  
ENGINEERING LTD.  
ENGINEERED TO STANDARD.

# WORK EXPERIENCE



**UNDERGROUND TRUCK TRAY AND DUCK TAIL EXTENSION**



**BERVES**  
ENGINEERING LTD.  
ENGINEERED TO STANDARD.

# WORK EXPERIENCE



**UNDERGROUND TRUCK TRAY AND DUCK TAIL EXTENSION**

(CONT'D)



**BERVES**  
ENGINEERING LTD.  
ENGINEERED TO STANDARD.

# WORK EXPERIENCE



**WELDING REPAIR WORKS ON JUMBO TILT LINK**





**BERVES**  
ENGINEERING LTD.  
ENGINEERED TO STANDARD.

# WORK EXPERIENCE



**WELDING REPAIR WORKS ON JUMBO TILT LINK (CONT'D)**



**BERVES**  
ENGINEERING LTD.  
ENGINEERED TO STANDARD.

# WORK EXPERIENCE



**UNDERGROUND FUEL AND SERVICE BAY PIPE LINE CONSTRUCTION**



**BERVES**  
ENGINEERING LTD.  
ENGINEERED TO STANDARD.

# WORK EXPERIENCE



**UNDERGROUND FUEL AND SERVICE BAY PIPE LINE CONSTRUCTION (CONT'D)**



**BERVES**  
ENGINEERING LTD.  
ENGINEERED TO STANDARD.

# WORK EXPERIENCE



**UNDERGROUND FAN INSTALLATION BASKET**



**BERVES**  
ENGINEERING LTD.  
ENGINEERED TO STANDARD.

# WORK EXPERIENCE



**SUG CRUSHER INSTALLATION WORKS**



**BERVES**  
ENGINEERING LTD.  
ENGINEERED TO STANDARD.

# WORK EXPERIENCE



**SUG CRUSHER INSTALLATION WORKS (CONT'D)**



**BERVES**  
ENGINEERING LTD.  
ENGINEERED TO STANDARD.

# WORK EXPERIENCE



**POLY LINER WORKS**



**BERVES**  
ENGINEERING LTD.  
ENGINEERED TO STANDARD.

# WORK EXPERIENCE



**POLY LINER WORKS (CONT'D)**





**BERVES**  
ENGINEERING LTD.  
ENGINEERED TO STANDARD.

# WORK EXPERIENCE



RECOVERY UNIT



**BERVES**  
ENGINEERING LTD.  
ENGINEERED TO STANDARD.

# WORK EXPERIENCE



**SAND BLASTING**



**BERVES**  
ENGINEERING LTD.  
ENGINEERED TO STANDARD.

# WORK EXPERIENCE



**STOP BLOCK**



**BERVES**  
ENGINEERING LTD.  
ENGINEERED TO STANDARD.

# WORK EXPERIENCE



**STOP BLOCK (CONT'D)**



**BERVES**  
ENGINEERING LTD.  
ENGINEERED TO STANDARD.

# WORK EXPERIENCE



**PASTEFIL STRUCTURE STEEL TAB**



**BERVES**  
ENGINEERING LTD.  
ENGINEERED TO STANDARD.

# WORK EXPERIENCE



**PASTEFIL STRUCTURE STEEL TAB (CONT'D)**



**BERVES**  
ENGINEERING LTD.  
ENGINEERED TO STANDARD.

# WORK EXPERIENCE



**PASTEFIL STRUCTURE STEEL TAB (CONT'D)**



**BERVES**  
ENGINEERING LTD.  
ENGINEERED TO STANDARD.

# WORK EXPERIENCE



**PASTE FILL STRUCTURE FABRICATION**





**BERVES**  
ENGINEERING LTD.  
ENGINEERED TO STANDARD.

# WORK EXPERIENCE



**PASTE FILL STRUCTURE FABRICATION (CONT'D)**



**BERVES**  
ENGINEERING LTD.  
ENGINEERED TO STANDARD.

# WORK EXPERIENCE



**PASTE FILL STRUCTURE CIVIL WORKS**



**BERVES**  
ENGINEERING LTD.  
ENGINEERED TO STANDARD.

# WORK EXPERIENCE



**PASTE FILL STRUCTURE CIVIL WORKS (CONT'D)**



**BERVES**  
ENGINEERING LTD.  
ENGINEERED TO STANDARD.

# WORK EXPERIENCE



**FUEL TANK**



**BERVES**  
ENGINEERING LTD.  
ENGINEERED TO STANDARD.

# WORK EXPERIENCE



**FUEL TANK (CONT'D)**



**BERVES**  
ENGINEERING LTD.  
ENGINEERED TO STANDARD.

# WORK EXPERIENCE



**CRUSHER HEAD CHUTE FABRICATION**



**BERVES**  
ENGINEERING LTD.  
ENGINEERED TO STANDARD.

# WORK EXPERIENCE



**CRUSHER HEAD CHUTE FABRICATION (CONT'D)**



**BERVES**  
ENGINEERING LTD.  
ENGINEERED TO STANDARD.

# WORK EXPERIENCE



**CRUSHER GRIZZLY PANEL**





**BERVES**  
ENGINEERING LTD.  
ENGINEERED TO STANDARD.

# WORK EXPERIENCE

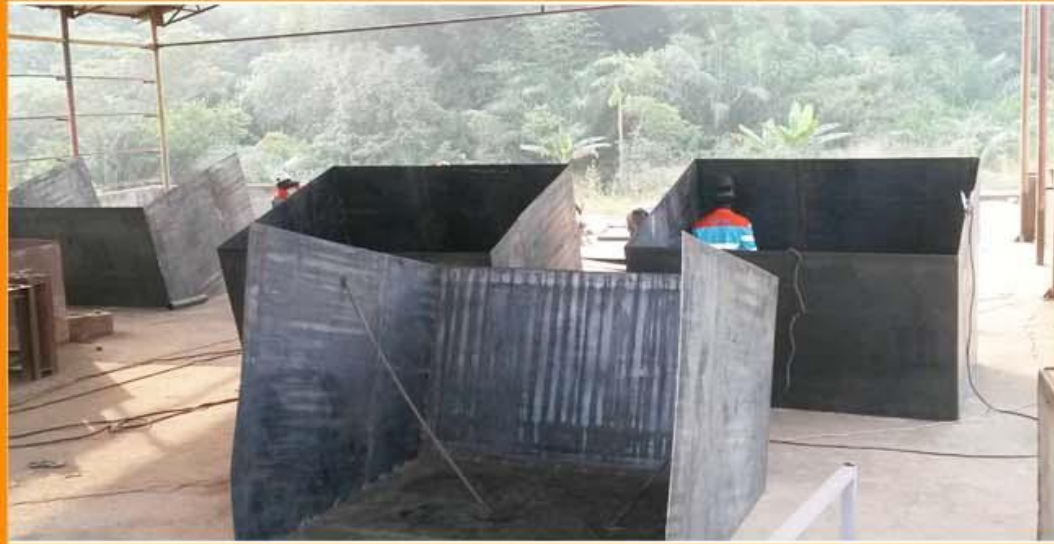


**CRUSHER GRIZZLY PANEL (CONT'D)**



**BERVES**  
ENGINEERING LTD.  
ENGINEERED TO STANDARD.

# WORK EXPERIENCE



FABRICATION AND INSTALLATION OF STALKER TANKS



**BERVES**  
ENGINEERING LTD.  
ENGINEERED TO STANDARD.

# WORK EXPERIENCE



FABRICATION AND INSTALLATION OF STALKER TANKS (CONT'D)



**BERVES**  
ENGINEERING LTD.  
ENGINEERED TO STANDARD.

# WORK EXPERIENCE



FABRICATION AND INSTALLATION OF LOUVER DAMPERS



**BERVES**  
ENGINEERING LTD.  
ENGINEERED TO STANDARD.

# WORK EXPERIENCE



FABRICATION OF WORK AND CHARGE BASKETS



**BERVES**  
ENGINEERING LTD.  
ENGINEERED TO STANDARD.

# WORK EXPERIENCE



INSTALLATION OF TRUCK DOOR